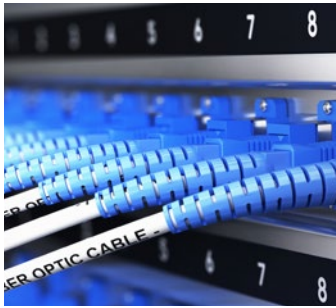


## Electrode Steam Humidifiers

Designed for internal use in specialty  
air handling equipment





## The Nortec MES2 Series humidifier resolves demanding OEM needs.

Conair is a world leader in state-of-the-art humidification technology. Our focus is concentrated exclusively on designing and building better humidification systems.

MES2 Electrode Steam Humidifiers employ the most advanced technology yet devised to reliably maintain interior environments at critical humidity levels. They provide the best of both worlds — top quality design and construction, with economy of installation and operation.

Every Nortec MES2 model has been engineered to meet the highest standards of cost-effective, efficient performance. They are designed for ease of installation, adaptability, simplicity of operation, ease of maintenance and servicing, energy efficiency, cleanliness and long-term reliability.

computer rooms  
hi-tech  
telecommunications  
clean rooms  
laboratories

# Operating Advantages

## Precise control

MES2 Series electrode humidifier installations handle the most demanding challenges. Each unit is controlled by its own integral electronics. All MES2 humidifiers have an automatic test routine, self diagnostic functions, and service indication. Continuous self service adjustments ensure the humidifier operates under any condition. MES2 humidifiers can be configured for simple on/off operation, precise modulating control and can even accept command inputs from a Building Management System via Modbus.

## Economy

Unlike other systems that are often difficult and costly to maintain, the MES2 electrode steam system produces pure, uncontaminated moisture with minimal maintenance downtime. There are no heating elements to get coated with mineral deposits and sludge. Any water-borne impurities are deposited in a replaceable cylinder where they are periodically flushed through the automatic drain.

Operating costs are reduced through efficient steam conversion rates and minimal energy losses due to low hot water drain rates. MES2 electrode humidifiers use up to 5 times less water than other technologies.

## Installation Flexibility

MES2 Series humidifiers offer unprecedented installation flexibility. They can be configured for both small and large systems and are ideal in computer room and specialty air handling systems. Each capacity boasts its own powder coated cabinet to minimize unit footprint.



# Technology

## Electrode Stem

- Produces mineral free, sterile steam
- Quick and easy cylinder replacement
- 98% thermal efficiency
- Adjustable output
- Adjusts to varying potable water conditions

## Modbus Communication

The optional Modbus interface provides monitoring and control of all operational parameters via the Building Management System. The Modbus interface board can be added at the time of order or can be easily added in the field.

System Features	
Minimal size per capacity	■
On/Off or modulation control	■
Patented Auto-Adaptive Control	■
Drain water tempering to 140°F (60°C) max	■
Three day inactivity hygienic drain	■
Capacity adjustment down to 20%	■
End of cylinder life pre-notification	■
Remote fault indication	■
Two year limited warranty	■
C_UL-US Recognized Component	■
Plumbing enclosure	■
Modbus Interface	■
Enable/disable unit	
End of cylinder life	
Operation run time	
Steam output	
Amp draw	
Faults	

■ Standard ■ Optional

# System Configurations

Condair offers a choice of five product configurations. Each configuration is offered in a capacity range of 5-30 pounds of moisture per hour.

## Remote Open Electrical



## Remote Closed Electrical



Attached Open Electrical



Attached Closed Electrical  
with optional plumbing enclosure



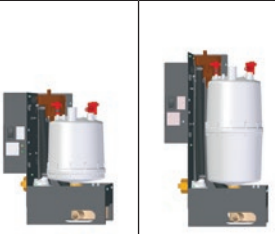

Attached Closed Electrical



Primary Voltage Wiring  
(Closed Attached Electrical Only)



# Technical Data

SPECIFICATIONS	05	10	15	20	25	30
Capacity: lbs/hr (kg/hr)	5 (2.3)	10 (4.5)	15 (6.8)	20 (9.1)	25 (11.3)	30 (13.6)
Maximum Input - kW	1.7	3.4	5.1	6.8	8.5	10.2
Voltage	208, 220-240, 277, 380, 440-480, 550-600					
Phase	1	1	1 and 3	1 and 3	3	3
Cylinder	100	200	300	300	400	400
						
<b>Physical Dimensions*</b>						
Depth - in (cm)	6.4 (16.3)		7.9 (20.1)		9.8 (24.9)	
Width (remote electrical) - in (cm)	7.5 (19.0)		8.9 (22.6)		10.3 (26.2)	
Width (attached electrical) - in (cm)	9.8 (24.8)		11.2 (28.4)		12.6 (32)	
Height - in (cm)	12.7 (35.3)	16.8 (42.7)	20.0 (50.8)		20.7 (52.6)	
Net weight – lbs (kg)	10.7 (5.0)	12.4 (5.8)	16.5 (7.8)		20.2 (9.5)	
Full weight – lbs (kg)	14.2 (6.6)	18.4 (8.5)	30.5 (14.2)		43.2 (20.0)	

\* Dimensions reflect fully enclosed cabinets. Given weights include attached enclosed electronics.

# Cylinder Technology

## Why Cylinders?

- Energy efficient
- Reduce down time and costly maintenance
- No special tools required to remove cylinder
- Removes all minerals left behind
- No need for specially treated water
- Keep humidifiers working at optimum performance

## Output vs. Cylinder Life

Unlike other humidifiers whose performance degrades gradually throughout the life of the cylinder, the MES2 Series maintains maximum efficiency from beginning to end.

As minerals build-up on the electrodes in the cylinder of the MES2 Series, the patented Auto-Adaptive control system automatically raises the water level slightly in the cylinder. This exposes fresh electrode surface to the water and maintains peak output and efficiency from the humidifier. Once the electrode surface is completely insulated by the minerals, the user is alerted to change the cylinder.







As the leading manufacturer of commercial/industrial humidification systems for more than 70 years, Condair has the technology and application expertise to meet the needs of any application.

**Contact us today and ensure you have the best humidification solution for your application.**

**USA** 2700 90th Street, Sturtevant, WI 53177  
**Canada** 2740 Fenton Road, Ottawa, Ontario K1T 3T7  
**Tel** 1.866.667.8321 **Fax** 613.822.7964 **Email** [na.info@condair.com](mailto:na.info@condair.com)  
**[www.condair.com](http://www.condair.com)**

